



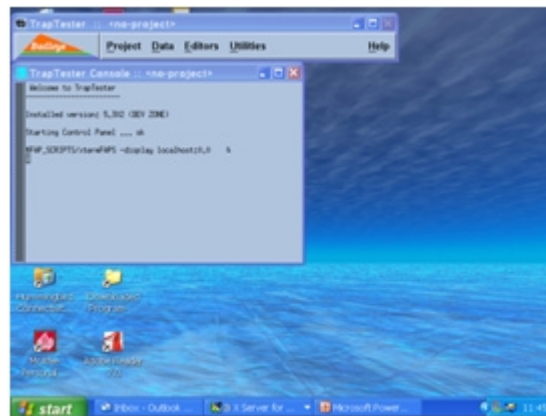
Issue 17: December 2005.

Beta version of TrapTester on PC

Badleys have been working on a Microsoft Windows™ port of their TrapTester software. Up until now, TrapTester has been rooted in the world of UNIX and Linux, but we are pleased to announce that we have TrapTester for PC in Beta version.

Andy Foster, the project engineer who has lead the development of the new Windows version is pleased with the results:

"we've been able to achieve a direct port in a timely fashion and without any loss of functionality."



At present the ported software is a standalone product that can access data created on UNIX systems. Third party direct links form the next phase of development. Landmark and Geoframe projects can currently be captured using a UNIX or Linux license and copied over to the Microsoft Windows™ installation.

PC TrapTester is able to take advantage of the cost / performance benefit of Windows PCs.

PC TrapTester running natively on Microsoft Windows™. Users familiar with TrapTester on Linux and UNIX will find that the PC version functions in exactly the same way.

PC TrapTester is currently under testing at Badleys and we expect to announce its commercial availability soon.

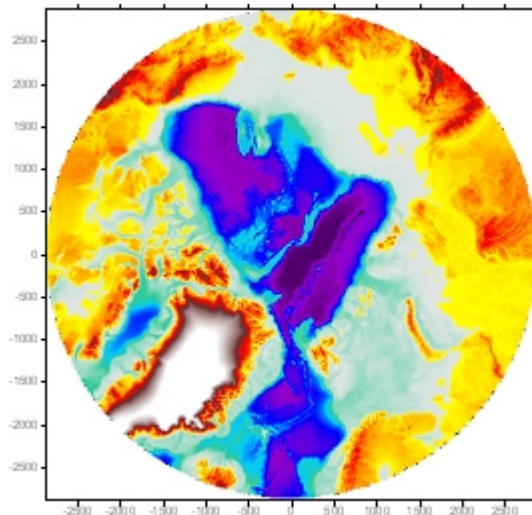
For further information on PC TrapTester please [contact us](#).

iSIMM project success

iSIMM - integrated Seismic Imaging and Modelling of Margins has drawn to a close after a successful 4-year research project.

The iSIMM project brought together two

interlinked research strands. The seismic strand involving acquisition, processing and analysis of new seismic data across the Faroes and Hatton Bank Atlantic margins, was coordinated by Prof Bob White (University of Cambridge) and Dr. Phil Christie (Schlumberger Cambridge Research).



(Above) A polar projection showing the topography and bathymetry of the Arctic region, an area where further deployment of iSIMM modelling technology is likely to be appropriate

The basin modelling strand, which involved Prof Nick Kuszniir (University of Liverpool) and Dr Alan Roberts (Badley Geoscience Limited), involved the formulation of new quantitative models for the formation of rifted margins and development of the SfMargin forward modelling software.

iSIMM was part of the Ocean Margins LINK programme, and was funded by a number of industry sponsors (BP, Shell, ConocoPhillips, Statoil, ENI, Anadarko, Amerada Hess, Western GECO) and the NERC and the DTI.

Further information on the iSIMM project can be found at the [project website](#).

Continental Margins - a new applied workflow

One of the outcomes of the iSIMM project is a new workflow for looking at continental margins through a 3-part integrated geodynamic analysis:

- Gravity modelling of crustal thickness, incorporating a thermal correction for stretching and ocean crust formation.

- Backstripping & forward modelling 2D sections for subsidence analysis.
- SfMargin modelling of margin breakup geometry, kinematics and thermal consequences

For further information on the iSIMM project, and the new modelling workflows please [contact us](#).

Continuation of the research theme - MM2

MM2, or Modelling Margins 2, will develop the theme further starting in 2006. Once again Badleys are collaborating with the University of Liverpool who will host the project and we are looking forward to another successful research initiative.

MM2 will allow further development of the technical capabilities of SfMargin over a three year period.

TrapTester update for our Chinese customers

He Xiangyang (Henry) from Geo-Tech Solutions Company Ltd, who represent Badleys in China, recently visited us in Lincolnshire for a comprehensive update on the new features in

Holiday season support for TrapTester customers

Over the holiday season, Badleys will be providing email support to its customers in the same way as in previous years. Please email support@badleys.co.uk if you require support

TrapTester 5.3.

It was a delight to have Henry here with us and we look forward to visiting China again soon to develop even closer links. Henry is pictured below (on the far right) with some of the Badleys team outside our offices in rural Lincolnshire.



and we will endeavor to respond as quickly as possible.

The Office will be closed from the 24th December 2005, and will reopen on the 3rd January 2006.

We wish everyone a happy holiday season and a happy new year.

New programmer joins team.

Badleys are pleased to welcome Cathal Dillon to the programming team. Cathal is a PhD qualified geologist with expertise in image processing. He will greatly enhance the visualization capabilities of the team and we look forward to further developments in the software that will benefit from his experience.

If you are unable to view images in this newsletter, a .pdf is available [from our website](#).
Please send us your [feedback and comments](#).

[To Unsubscribe to this newsletter please click here](#)



SOFTWARE • CONSULTANCY • TRAINING

TrapTester, TransGen, Triangle, Stretch, FlexDecomp

info@badleys.co.uk

Tel: +44(0)1790 753472

www.badleys.co.uk

Fax: +44(0)1790 753527
