

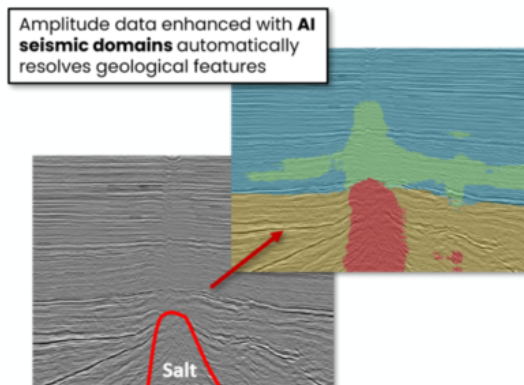
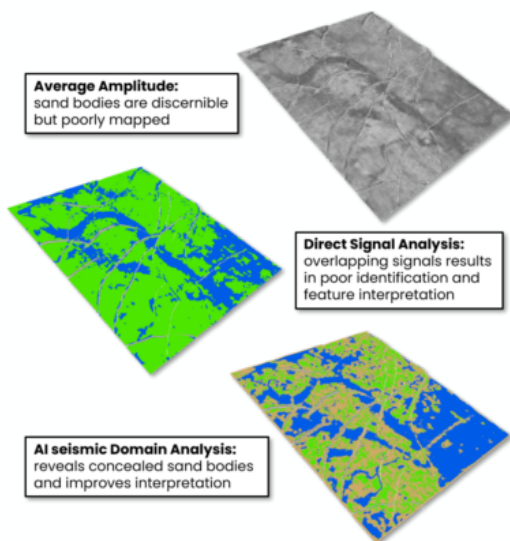
## Version T7.41 Now Available for Download

Badleys are pleased to announce the release of T7.410, our latest update to T7. Below is an overview of the additional functionality enhancements available in the latest T7 patch.

### What's New in T7.410

#### AI-Powered Seismic Domain Analysis

This proprietary technology, developed by BGL, uses unsupervised AI to segment seismic amplitude data into domains characterised by shared signal motifs, based solely on frequency-phase information. Seismic amplitudes are standardised prior to analysis, allowing the segmentation to be driven entirely by oscillatory characteristics. For a more detailed description of the technology, see our [technical notes](#).



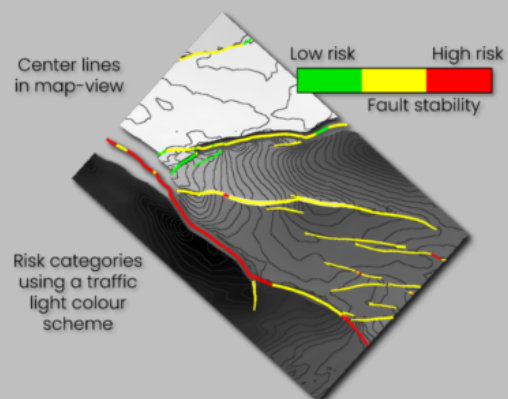
The new seismic domain analysis is applicable to both 2D seismic sections and 3D seismic volumes. In these examples, it delineates large-scale geological features, highlighting regions affected by halokinesis in 2D (above) and resolving the sand-body architecture of a fluvial system in 3D (left).

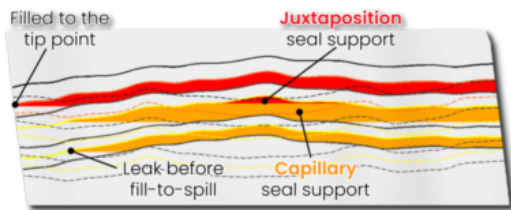
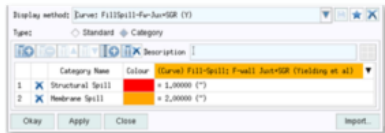
For an example of this technology applied to a commercial geological dataset, see our [technical notes](#).

#### New Category-Based Display Methods

Users can now define rule-based display categories using multiple geological conditions to allow complex datasets to be displayed in a clearer and more intuitive way.

These new display methods are particularly valuable for migration pathway visualisation and seal type classification but have many other uses as well. Several example display methods are included but these can easily be modified to fit the users needs.

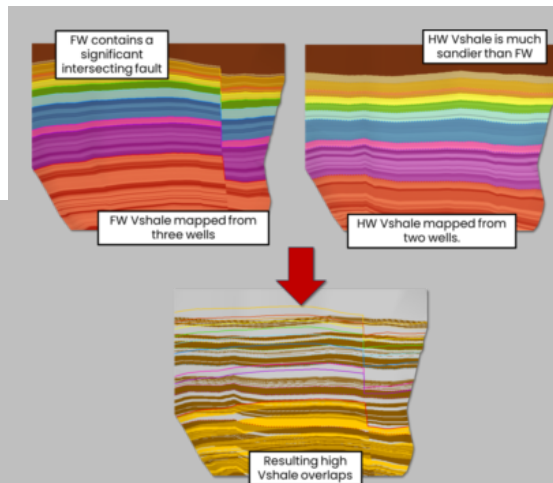




Allan Diagram showing column heights and supporting seal type

## Enhanced Fault Seal Evaluation

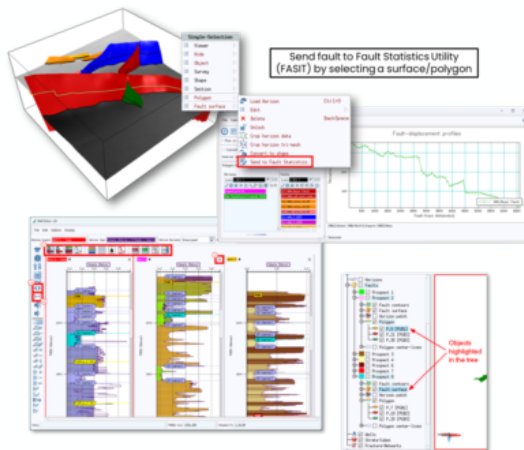
T7.410 introduces Fill-Spill Fault Surface Attributes. These provide a clearer understanding of potential hydrocarbon or CO<sub>2</sub> fill levels by assessing both juxtaposition sealing and membrane (SGR) sealing behaviour on structural framework models.



## Improved Well Control Across Faults

Users can now assign independent well lists to the footwall and hanging wall of individual faults.

This provides greater flexibility when modelling geological properties across structurally complex areas, particularly where lithology or stratigraphy differs significantly on either side of a fault.



## Functional & Usability Enhancements

- Improved 3D Horizon Auto-Tracker with optional fault indicator data for more reliable interpretation around faults.
- Direct access to Fault Statistics (FASIT) from polygons and fractures.
- Direct transfer of VShale and permeability logs into Triangle.
- Shared colourmap support across projects.
- Object list filtering for faster navigation.
- Improved Volume Editor highlighting and viewer interaction.
- A refreshed Well Editor interface with new toolbar functions and improved usability.

And many more...

## Upgrade Information

T7.410 is supplied as a patch release for existing T7.40 installations. As part of the upgrade process, projects will be automatically updated when first opened. We recommend creating a backup of existing projects before upgrading, as upgraded projects cannot be reopened in earlier versions of T7.

If you have any questions about upgrading or would like a demonstration of any of the new features (from T7.400 or T7.410), please don't hesitate to contact our [support team](#).

Best regards,

The Badleys Team



Badley Geoscience Ltd - North Beck House, Spilsby, Lincolnshire - PE23 5NB - UK  
<http://www.badleys.co.uk/index.php> - [info@badleys.co.uk](mailto:info@badleys.co.uk)

We sent out this message to all existing Badleys customers.  
 If you want more information about our privacy policy, please visit [this page](#).

If you no longer wish to receive these emails, simply click on the following link [Unsubscribe](#).

©2026 Badley Geoscience Ltd. All rights reserved.