

CubeXplorer brings true volume rendering with transparency to TT6. Optimal visualisation of internal seismic structures tuned with user-defined transparency-control volumes is a breeze with our multiple, interactive, 'probes'

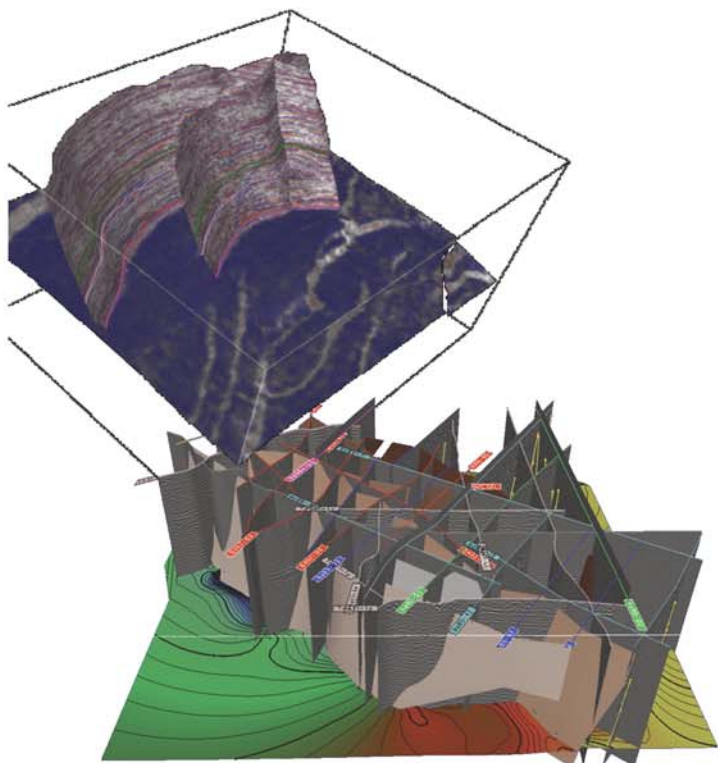
Precise structural interpretation around branching faults is greatly enhanced by picking seismic directly on fault surfaces. Use TT6 to create amplitude extractions (from any volume) on faults and horizons

2D&3D seismic interpretation

TT6 provides a rich mix of traditional and more innovative methods of seismic interpretation in 2-dimensional and 3-dimensional contexts. We firmly believe that the best structural work is done more intuitively in a 3-dimensional workspace but we also understand that the systematic, section-by-section approach is still a useful technique. TT6 lets you mix 2D and 3D seismic data, multiple surveys, multiple cubes and advanced volume visualization in a single Seismic data import from GeoFrame, OpenSpirit, OpenWorks, SEG-Y-2D and SEG-Y-3D sources.

Advantages

- > Interpretation of 2D and 3D in a fully 3D environment gives a strong visual advantage (Plus traditional 2D section and map views)
- > Multiple 2D and 3D surveys in a single 3D environment: essential for making robust structural interpretations
- > Arbitrary line are created from within the Volume Editor's Seismic Module (OR by import of ASCII files OR from OpenWorks point-files using the TT6-OpenWorks direct link).
- > Arbitrary line navigation and interpretation can be exported using one of the standard routes
- > Amplitude on horizons useful for lateral tracking of fault surfaces
- > Interpreting amplitudes on faults is a very good way to map accurately fault linkage.



With TT6, multiple 2D and 3D surveys are available for editing in real time in a single 3D environment, essential for making robust structural interpretations

Create arbitrary lines in any orientation, helping you better visualise structures oblique to the survey (bottom right)

