

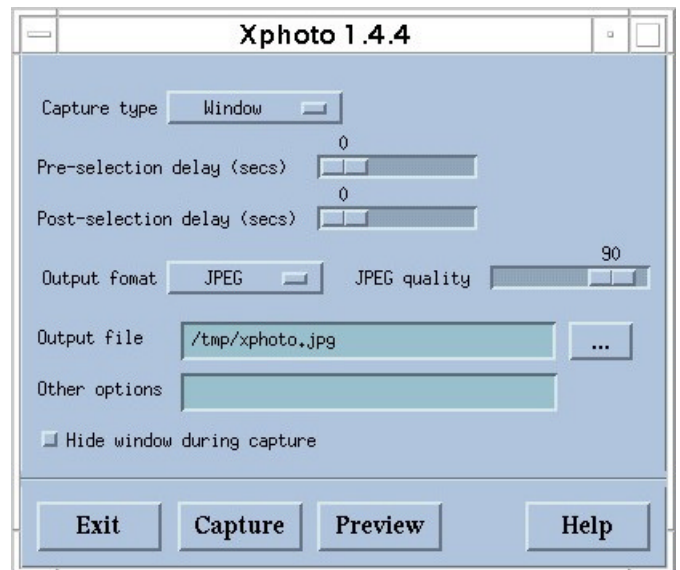
# XPhoto . . .

## Image capture tool for X-Windows

XPhoto is a simple, standalone GUI-based X-Windows screen capture utility, currently supported on SunOS 5.x, Irix 6.5+ and RedHat Enterprise Linux 3 and can be back displayed onto X-servers.

### XPhoto Features

- Output file formats: jpeg, png, binary RGB
- Multi-screen support for region/window selection
- Obtains correct colours for colour-flashed windows (up to 256 colourmaps)
- Captures OpenGL and other 3D graphics displays in full 24 bit colour.
- Caters for transparent overlay windows
- Post-selection delay for capture of popup windows/menus etc
- FlexIm floating licensing system
- Preview jpeg or png files using the built-in preview button (requires Netscape)
- Run on Solaris or Irix - back display on any X-Server



### Installation

The XPhoto distribution is supplied as a simple Unix compressed tar file. Follow these simple steps to install XPhoto.

- Create a suitable installation directory: `mkdir xphoto` (referred to as *XP\_HOME* below)
- Move the distribution file into the installation directory: `mv xphoto1.4.tar.Z xphoto`
- Uncompress the distribution: `uncompress xphoto1.4.tar.Z`
- Untar the distribution: `tar -xvf xphoto1.4.tar`

### Obtaining a test-license

Without a license XPhoto will operate in DEMO mode. The result of this is that all images captured are scarred with a cross-hatch pattern. To obtain a limited period test-license you should send a license request e-mail to [info@badleys.co.uk](mailto:info@badleys.co.uk). The e-mail should include your system's host-id and host-name and the number of license seats required.

In order to obtain the correct host-id for your system you should run the following command at a shell prompt: `XP_HOME/scripts/lmadmin -hostid`. The host-name can be obtained by using the `hostname` system command.

## Installing a license

Once a license request has been sent and a license granted, a license key file will be attached to a return e-mail. The license key file MUST be saved as `XP_HOME/license/license.dat`

Once the license file is in place the Flexlm license must be started on the machine designated as the license server: `XP_HOME/scripts/lmadmin -start` - this command can be issued at machine boot-time to auto-start the license system. Now XPhoto can be run by any user on the network provided that they can "see" the XPhoto installation area. The license system can be stopped using `XP_HOME/scripts/lmadmin -stop` and the current license usage can be determined with `XP_HOME/scripts/lmadmin -usage`. A license log file is kept in `XP_HOME/license/license.log`

## Running XPhoto

To start XPhoto, simply type `XP_HOME/scripts/xphoto` where `XP_HOME` is the directory containing the XPhoto installation.

## Advanced Options

The following advanced options may be defined as space-separated text within the XPhoto "Other options" text field.

- `-e err-file` Any run time errors and verbose mode diagnostics will be written to `err-file`. If this option is not specified the output is written to standard error. If this option is not specified and `-verbose` option is used the `-nograd` is enabled automatically (to avoid server hangup).
- `-noblend` Ignore transparent overlay windows. These are included and blended by default.
- `-qlength m` Max no. of elements in the XColor array that can be used with `XQueryColors` function (default = 256). This arg need not normally be supplied but some X-Servers will complain with X-Errors if the value used is too big.
- `-verbose` Output verbose diagnostics to stderr or `err file`(see `-e`).
- `-nograd` By default XPhoto will grab the X server while an image is being captured. This prevents the image changing during capture. Use this option to disable the server grab. This option is enabled automatically if any output is being written to stderr or stdout.
- `-maxerrs n` If XPhoto encounters any X Errors, it will tolerate `n` occurrences before exiting. Default = 10,000. A value of 0 will cause immediate exit if an X Error occurs.
- `-maxlevel n` (Diagnostic) Only include image data from windows at or below the given level in the output image. The window levels for a given capture can only be found by pre running XPhoto in verbose mode.

## Run-time Environment

The run-time environment for XPhoto is configured automatically when it is started by the script `XP_HOME/scripts/xphoto`. However, some of the environment can be pre-set prior to running the script to override the default settings. The variables which can be pre-set are:

- `XP_BROWSER` This is the location of Netscape on your system. It defaults to `/opt/NSCPcom/netscape` for Solaris systems, `/usr/bin/mozilla` for Linux and to `/usr/bin/X11/netscape` on Irix systems.
- `XP_PREVIEW_CMD` This is the location of an executable that is used to preview the XPhoto output files. It defaults to `XP_HOME/scripts/openurl`

## Further Information

For further information regarding XPhoto, including pricing, please e-mail [info@badleys.co.uk](mailto:info@badleys.co.uk)